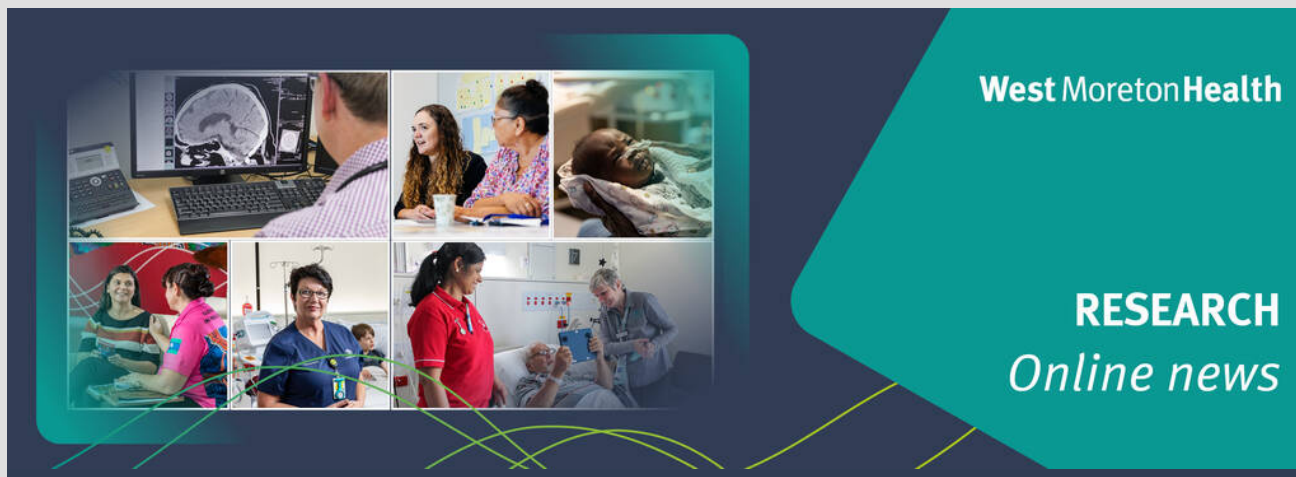


WM Communications

From: West Moreton Health <WMCommunications@health.qld.gov.au>
Sent: Tuesday, 20 June 2023 11:56 AM
To: WM Communications
Subject: Latest news from West Moreton Health researchers (June 2023)

Having trouble viewing this email? [View Online](#)



20 June 2023



Dementia and delirium research supports patients

West Moreton Health's Geriatrician team (pictured) shared the results of six research projects at the Australian and New Zealand Society of Geriatric Medicine Annual Scientific Meeting last month.

These projects highlighted:

- improving dementia care through staff education, comprehensive history-taking, assessment of early, tailored pharmacological intervention and diversional therapy
- the relationship between a history of mental illness or trauma and the development of behavioural and psychological symptoms of dementia

- how the use of a delirium screening tool early in the hospital admission process can predict adverse outcomes such as short-term morbidity and inform family members about the patient's diagnosis.
- factors that affect the ability of older patients to regain mobility after hip-fracture surgery.
- patient outcome improvements through the Orthogeriatric Liaison Service and Eat Walk Engage program, including earlier review, earlier first day post-op walking and delirium assessments.

Explore project abstracts from our cancer care research scholarship recipients

Three projects have been funded through the Regina and Vicki Doig Research Scholarship for Cancer Care that will explore care options for residents with blood disorders, develop strategies to improve cervical cancer screening, and investigate access to chemotherapy options for rural consumers. The full project abstracts for each research study are [available online](#). The recipients are Cancer Care Co-ordinator Clinical Nurse Consultant Mark Rothery, Oncology Nurse Unit Manager Cherry Spross, and the Obstetrics and Gynaecology trainee team led by Dr Lilantha Wedisinghe.

Does your research idea need funding to become a reality? We've collated the 2023 grants and fellowship opportunities available for you [on the intranet](#) to find the right funding.

Meet our researchers

Dr Adel de Klerk-Braasch

IH General & Respiratory Medicine Staff Specialist

I'm proud to be a member of the Preventative Integrated Care Service (PICS). My focus is on managing severe asthma and reducing unnecessary hospital admissions for patients with chronic respiratory conditions. I collaborate with institutions like the University of Southern Queensland School of Psychology and Wellbeing and the University of Queensland School of Public Health, as well as engage with General Medicine trainees, doctors, and nurses. This allows me to integrate research into my work and contribute to the field of respiratory medicine while providing excellent care to my patients. I'm driven by the opportunity to make a real impact on the lives of people with respiratory conditions. Outside of work, I am an amateur glass artist and gardener.



Famous person I'd like to meet

New York City's Lenox Hill Hospital chair of neurosurgery Dr David Langer. He was featured on the Netflix docuseries Lenox Hill and is an exceptional leader, clinician, and researcher, creating an environment in his department where excellence and collaboration ensure compassionate and exceptional care.

Books on my nightstand

Meditations by Marcus Aurelius and *The Overstory* by Richard Powers.

Meet our researchers

Dr Marc Nickels

Critical Care and Surgery Advanced Physiotherapist

I have a special interest in physiotherapy with critically ill patients. My PhD was on Exercise in ICU which included a randomised controlled trial to investigate the effect of in-bed cycling on the maintenance of muscle mass and function in critically ill patients at the Princess Alexandra Hospital. I've also had articles published on the safety of exercise with critically ill patients, COVID recovery and on extubation failure after cervical spinal cord injury. I'm a keen runner and regularly compete in races up to marathon distances.



Famous person I'd like to meet

Birmingham 2022 Commonwealth Games Australian 1500m gold medallist Ollie Hoare. He is an entertaining professional runner who trains in America and drinks too much Mountain Dew.

Favourite holiday destination

Japan. I love the juxtaposition of modern and traditional buildings alongside the culture. Niseko in Hokkaido is the best skiing destination that I've visited. Locally, Stradbroke Island offers a relaxed camping holiday with incredible native flora and fauna.

Meet our team

Lisa Smith

Clinical Trial Coordinator

My role supports the growth of clinical trials across our health service and assists departments with active trials to meet the new requirements of the National Clinical Trial Governance Framework.

I have spent a decade with the Royal Darwin Hospital Alan Walker Cancer Care Centre's Clinical Trial Unit working with medical, radiation oncology and haematology teams, psycho-social cancer research projects and clinical quality registries.



Departments interested in growing their clinical capacity can email me at [Clinical Trials](#).

Latest research at West Moreton Health

Research Projects authorised to begin at West Moreton Health from 2 March 2023 to 30 May 2023:

- The C*STEROID Trial: Corticosteroids before planned caesarean section from 35+0 to 39+6 weeks of pregnancy led by A/Prof Kassam Mahomed, Clinical Services, Obstetrics & Gynaecology
- Motivation for clinical education in Physiotherapists - development of a workforce assessment instrument led by Ms Joanne Hargreaves (RBWH), Allied Health, Physiotherapy
- Telehealth Challenges and barriers for Oncology nurses led by Ms Deena Joseph, Clinical Services, Oncology
- Partners in Prevention: Understanding and Enhancing First Responses to Suicide Crisis Situations – Data Linkage Study led by Dr Carla Meurk, Mental Health and Specialised Services, QCMHR
- Statewide Inpatient Glucometric benchmarking of 12 Queensland hospitals led by Dr Mitchell McKean, Clinical Services, Medicine
- CHD LIFE+ Project Protocol 2 led by Children's Health Queensland A/Prof Robert Justo, statewide project

If you are looking to submit an application for Research Ethics and/or Research Governance review and have queries about the process or what is required, email [Carine and Janani](#).

Exploring our research mapping and qualifications

Two WMH-wide mapping projects have been undertaken by our research team, as we look to explore both the current research activity within the health service and capture the data on research qualifications staff hold. The results of the survey are shown in the image, highlighting the range of departments and teams undertaking research projects and the distribution of research qualifications among WMH staff. This shows:



- 12 staff with a research postgraduate certificate and two staff undertaking studies
- four staff with a graduate diploma and two staff undertaking studies
- 36 staff with a Masters degree and 12 staff undertaking studies
- 11 staff members with a PhD and one staff member undertaking studies.

Latest research articles at West Moreton Health

Thirty West Moreton Health teams co-authored 29 research articles that were published between March and May 2023:

- Queensland Centre for Mental Health Research (QCMHR): 22 research articles by QCMHR staff employed by WMH
- Obstetrics and Gynaecology: 2 research articles
- Allied Health, Kidney Health Services, Nursing, Physiotherapy, Preventative and Prison Health Services and Respiratory: 1 research article each.

West Moreton Health staff are highlighted in bold.

- Arnautovska, U., Siskind, D., Pearson, E., **Baker, A.**, Reid, N., Kwan, W. W. L., . . . Warren, N. (2023). [Comprehensive geriatric assessment for younger outpatients with severe mental illness: Protocol for a feasibility study](#). *BMJ Open*, 13(2), e069518.
- Arnautovska, U., Vitangcol, K., **Kesby, J. P.**, Warren, N., Rossell, S. L., Neill, E., . . . Siskind, D. (2023). [Verbal and visual learning ability in patients with treatment-resistant schizophrenia: A 1-year follow-up study](#). *Schizophrenia Research: Cognition*, 33, 100283.
- Carter, H. E., **Wallis, S.**, **McGowan, K.**, Graves, N., Pitt, R., **Coffey, S.**, . . . & **Parcell, M.** (2023). [Economic evaluation of an integrated virtual care programme for people with chronic illness who are frequent users of health services in Australia](#). *BMJ Open*, 13(4), e066016.
- Clugston, B., **Meurk, C.**, Harris, M., Burgess, P., & Heffernan, E. (2023). [Persons with mental disorders and suicidality in crisis or high-risk situations involving police negotiation: a systematic review](#). *Psychiatry, Psychology and Law*, 1-19.

- Conn, K. A., Zou, S., Das, J., Alexander, S., **Burne, T. H. J.**, & **Kesby, J. P.** (2023). [Activating the dorsomedial and ventral midbrain projections to the striatum differentially impairs goal-directed action in male mice](#). *Neuropharmacology*, 234, 109550.
- Garcia-Sanchez, D., Darssan, D., Lawler, S. P., Warren, C. M., **De Klerk-Braasch, A.**, & Osborne, N. J. (2023). [Asthma and anxiety development in Australian children and adolescents](#). *Pediatric Allergy and Immunology*, 34(3), e13941.
- Haslam, D. M., Lawrence, D. M., Mathews, B., Higgins, D. J., **Erskine, H. E.**, **Thomas, H. J.**, . . . Malacova, E. (2023). [The Australian Child Maltreatment Study \(ACMS\), a national survey of the prevalence of child maltreatment and its correlates: Methodology](#). *Medical Journal of Australia*, 218, s5-s12.
- Higgins, D. J., Mathews, B., Pacella, R., Scott, J. G., **Erskine, H. E.**, **Thomas, . . . Dunne, M. P.** (2023). [The prevalence and nature of multi-type child maltreatment in Australia](#). *Medical Journal of Australia*, 218, s19-s25.
- Kazdin, A. E., Wu, C. S., Hwang, I., Puac-Polanco, V., Sampson, N. A., **McGrath, J. J.**, . . . Kessler, R. C. (2023). [Antidepressant use in low- middle- and high-income countries: A World Mental Health Surveys report](#). *Psychological Medicine*, 53(4), 1583-1591.
- Lawrence, D. M., Hunt, A., Mathews, B., Haslam, D. M., **Erskine, H. E.**, **Thomas, H. J.**, . . . Scott, J. G. (2023). [The association between child maltreatment and health risk behaviours and conditions throughout life in the Australian Child Maltreatment Study](#). *Medical Journal of Australia*, 218, s34-s39.
- Liu, D., Meyer, D., Fennessy, B., Feng, C., Cheng, E., **Mowry, B.**, . . . Charney, A. W. (2023). [Schizophrenia risk conferred by rare protein-truncating variants is conserved across diverse human populations](#). *Nature Genetics*, 55(3), 369-376.
- **Mahomed, K.** (2023). [Expectant management for women with prelabour rupture of membranes in the presence of GBS at 34-37 weeks' gestation](#). *BJOG*, 130(6), 684.
- Mathews, B., Meinck, F., **Erskine, H. E.**, Tran, N., Lee, H., **Thomas, H. J.**, . . . Haslam, D. M. (2023). [Adaptation and validation of the Juvenile Victimization Questionnaire-R2 for a national study of child maltreatment in Australia](#). *Child Abuse & Neglect*, 139, 106093.
- Mathews, B., Pacella, R., Scott, J. G., Finkelhor, D., **Erskine, H. E.**, **Thomas, H. J.**, . . . Dunne, M. P. (2023). [The prevalence of child maltreatment in Australia: findings from a national survey](#). *Medical Journal of Australia*, 218, s13-s18.
- Mathews, B., **Thomas, H. J.**, & Scott, J. G. (2023). [A new era in child maltreatment prevention: call to action](#). *Medical Journal of Australia*, 218, s47-s51.
- McLindon, L. A., James, G., Beckmann, M. M., Bertolone, J., **Mahomed, K.**, Vane, M., . . . Li, W. (2023, Apr 3). [Progesterone for women with threatened miscarriage \(STOP trial\): A placebo-controlled randomized clinical trial](#). *Human Reproduction*, 38(4), 560-568.
- Momen, N. C., Lasgaard, M., Weye, N., Edwards, J., **McGrath, J. J.**, & Plana-Ripoll, O. (2022). [Representativeness of survey participants in relation to mental disorders: a linkage between national registers and a population-representative survey](#). *International Journal of Population Data Science*, 7(4), 1759.

- **Nickels, M. R.**, Blythe, R., White, N., Ali, A., Aitken, L. M., Heyland, D. K., & McPhail, S. M. (2023). [Predictors of acute muscle loss in the intensive care unit: A secondary analysis of an in-bed cycling trial for critically ill patients](#). *Australian Critical Care*. Advance online publication.
- Pacella, R., Nation, A., Mathews, B., Scott, J. G., **Erskine, H. E.**, **Thomas, H. J.**, . . . Monks, C. (2023). [Child maltreatment and health service use: findings of the Australian Child Maltreatment Study](#). *Medical Journal of Australia*, 218, s40-s46.
- Pertile, R. A. N., Brigden, R., Raman, V., **Cui, X.**, Du, Z., & **Eyles, D.** (2023). [Vitamin D: A potent regulator of dopaminergic neuron differentiation and function](#). *Journal of Neurochemistry*. Advance online publication.
- Santomauro, D. F., Purcell, C., **Whiteford, H. A.**, **Ferrari, A. J.**, & Vos, T. (2023). [Grading disorder severity and averted burden by access to treatment within the GBD framework: A case study with anxiety disorders](#). *Lancet Psychiatry*, 10(4), 272-281.
- Schijven, D., Postema, M. C., Fukunaga, M., Matsumoto, J., Miura, K., **Mowry, B. J.**, . . . Francks, C. (2023). [Large-scale analysis of structural brain asymmetries in schizophrenia via the ENIGMA consortium](#). *PNAS*, 120(14), e2213880120.
- Schwarz, M., Ward, E. C., Coccetti, A., Simmons, J., Burrett, S., **Juffs, P.**, . . . Foley, J. (2023). [Identifying opportunities to optimise the electronic medical record for allied health professionals: A concept mapping study](#). *Australian Health Review*. Advance online publication.
- Scott, J. G., Malacova, E., Mathews, B., Haslam, D. M., Pacella, R., **Erskine, H. E.**, . . . **Thomas, H. J.** (2023). [The association between child maltreatment and mental disorders in the Australian Child Maltreatment Study](#). *Medical Journal of Australia*, 218, s26-s33.
- Wallace, D., Heffernan, E., **Meurk, C.**, McKay, D., & Nas Jones, C. (2023). [Bipolar disorder in the Australian Defence Force: Estimating prevalence from Defence electronic health system records](#). *Journal of Military and Veterans' Health*. Advance online publication.
- Weye, N., **McGrath, J. J.**, Lasgaard, M., Momen, N. C., Knudsen, A. K., Musliner, K., & Plana-Ripoll, O. (2023). [Agreement between survey- and register-based measures of depression in Denmark](#). *Acta Psychiatrica Scandinavica*, 147(6), 581-592.
- **Whiteford, H.**, Bagheri, N., **Diminic, S.**, Enticott, J., Gao, C. X., Hamilton, M., . . . Skinner, A. (2023). [Mental health systems modelling for evidence-informed service reform in Australia](#). *Australian & New Zealand Journal of Psychiatry*. Advance online publication.
- Wright, E., Pagliaro, C., Page, I. S., & **Diminic, S.** (2023). [A review of excluded groups and non-response in population-based mental health surveys from high-income countries](#). *Social Psychiatry and Psychiatric Epidemiology*. Advance online publication.
- Zhang, J., Diwan, V., Wang, Z., Healy, H. G., **Venuthurupalli, S. K.**, Abeysekera, R., & Hoy, W. E. (2023). [The impact of anaemia on outcomes, admissions, and costs in patients with chronic kidney disease in two public nephrology practices in Queensland: A CKD.QLD Registry Study](#). *International Journal of Nephrology*, 2023, 8720293.

- **Education program to help nurses and midwives create and present conference abstracts:** This nurse-focused abstract writing series is a four-module education program to support active participation in conferences and opinion leadership activities. Available on-demand. [Abstract Resources - ASHM](#)
- **Metro North and Metro South Allied Health Research Symposium:** The free joint Allied Health Research Symposium is on at the Translational Research Institute or online. 2 August, 8.30 am - 4.30 pm. [Click here to register](#)
- **UniSQ School of Health and Medical Sciences Student Research Symposium:** Held in-person at the University of Southern Queensland Toowoomba campus. 6 July, 8.30 am - 3 pm. Contact [WM Research](#).



Connect with us on Facebook:
 /wmhhs

 Queensland Government
 connect . respect . excel

This email was sent by West Moreton Communication and Engagement,
 WMCommunications@health.qld.gov.au to WMCommunications@health.qld.gov.au

[Unsubscribe](#)



Disclaimer: This email and any attachments may contain legally privileged or confidential information and may be protected by copyright. You must not use or disclose them other than for the purposes for which they were supplied. The privilege or confidentiality attached to this message and attachments is not waived by reason of mistaken delivery to you. If you are not the intended recipient, you must not use, disclose, retain, forward or reproduce this message or any attachments. If you receive this message in error, please notify the sender by return email or telephone and destroy and delete all copies. Unless stated otherwise, this email represents only the views of the sender and not the views of the Queensland Government.

Queensland Health carries out monitoring, scanning and blocking of emails and attachments sent from or to addresses within Queensland Health for the purposes of operating, protecting, maintaining and ensuring appropriate use of its computer network.
